

承 认 书

Samples approval sheet

客户名称 (Customer name): _____

元件名称 (Production name): 5MM 草帽白发蓝长脚

型 号 (Model): GBH5EB00T-L

样品单号 (Single sample No): _____

日 期 (Date): 2015-5-26

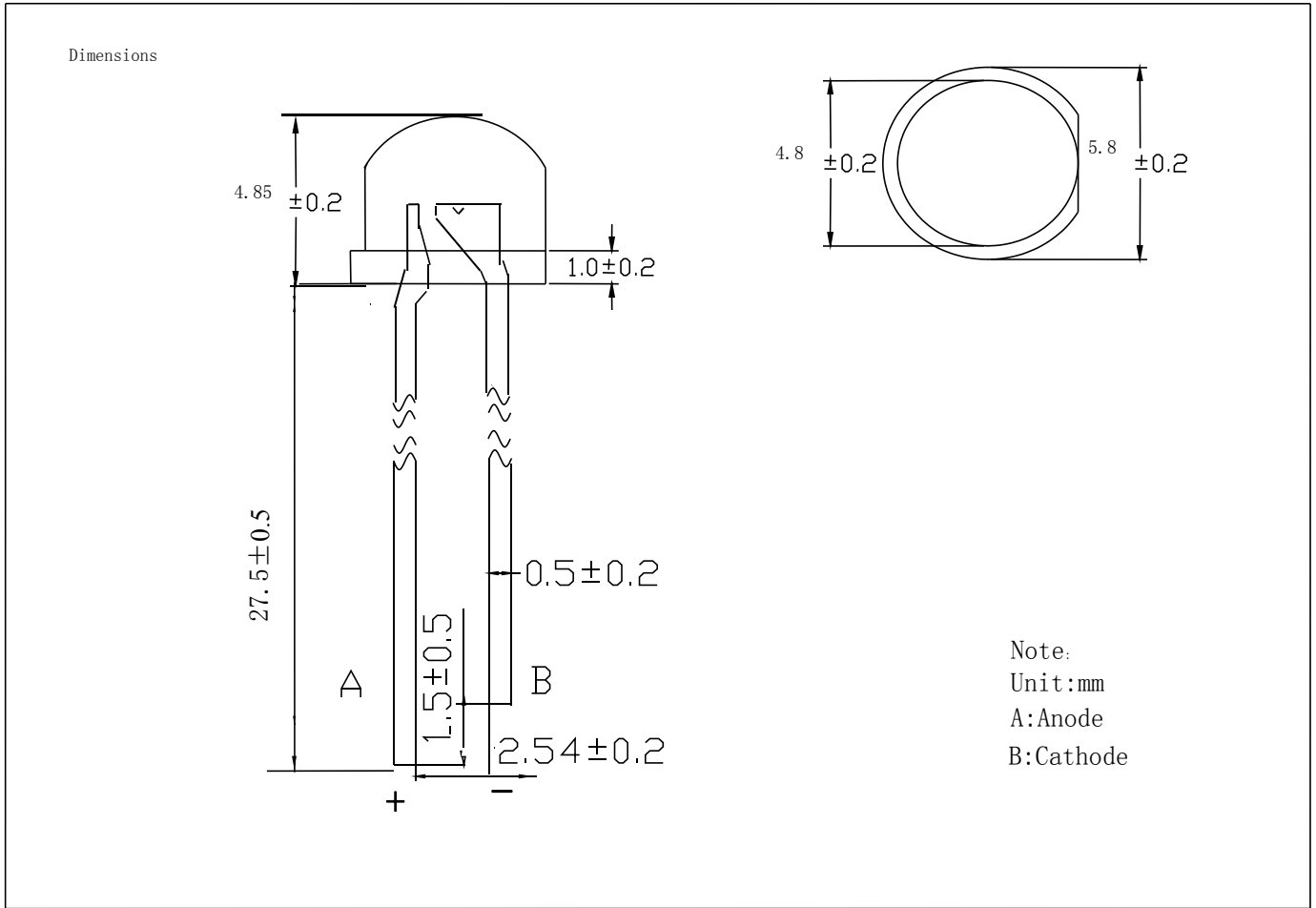
编制 Prepared by	审核 Checked by	核准 Approved by	市场部 Market Dept.
刘燕	徐斌	黎汪诚	

客户确认 CUSTOMER CONFIRMATION		
确认 Confirmed by	审核 Checked by	核准 Approved by

型 号 Model :	GBH5EB00T-L	页 码 Page: 1/7
-------------	-------------	---------------

深圳市光宝鸿科技有限公司

一、外形图 Outline dimensions:



单位 Unit	公差 Tolerance	芯片材料 Die material	胶体颜色 Lens color	发光颜色 Emission color
mm	±0.2mm	InGaN	WATER CLEAR	BLUE

※备注：承认书之编号和型号可用于查询，客户如有需要，请提供相应的编号和型号。

Remark: P/N & Model in samples approval sheet can be used to inquire, please provide corresponding P/N& model if customer need.

型 号 Model :	GBH5EB00T-L	页 码 Page: 2/7
-------------	-------------	---------------

深圳市光宝鸿科技有限公司

二、光电参数 Photoelectricity Parameter

Light color: BLUE、 Color

RED COLOR:

Parameter	Symbol	Min	Typ.	Max	Unit	Test Condition
Forward voltage	V_F	2.8	3.0	3.4	V	IF=20 mA
Luminous intensity	I_V	600		800	mcd	IF=20 mA
Peak emission wavelength	λ_p	460	465	470	nm	❖
Half intensity angle	$\Delta \ominus$	❖	140	❖	deg	❖

GREEN COLOR:

Parameter	Symbol	Min	Typ.	Max	Unit	Test Condition
Forward voltage	V_F				V	IF=20 mA
Luminous intensity	I_V				mcd	IF=20 mA
Peak emission wavelength	λ_p				nm	❖
Half intensity angle	$\Delta \ominus$	❖		❖	deg	❖

BLUE COLOR:

Parameter	Symbol	Min	Typ.	Max	Unit	Test Condition
Forward voltage	V_F				V	IF=20 mA
Luminous intensity	I_V				mcd	IF=20 mA
Peak emission wavelength	λ_p				nm	❖
Half intensity angle	$\Delta \ominus$	❖		❖	deg	❖

备注：亮度测试公差±15%、波长测试公差±1nm、正向电压测试公差±0.05V

Remark: The tolerance of intensity:±15%, The tolerance of wave length:±1nm, The tolerance of forwards voltage: ±0.05V. Only reference for above data when testing

型号 Model :

GBH5EB00T-L

页码 Page: 3/7

深圳市光宝鸿科技有限公司

三、典型光电特性曲线图 Typical photo electricity characteristic curve chart

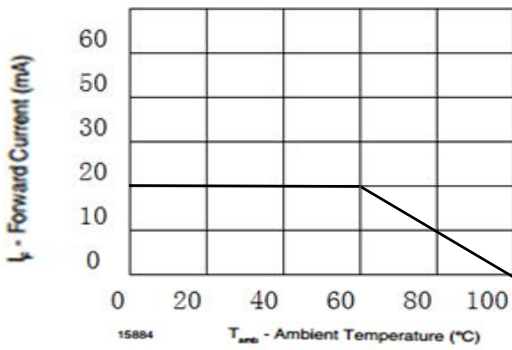


Fig. 1 - Forward Current vs. Ambient Temperature for InGaN

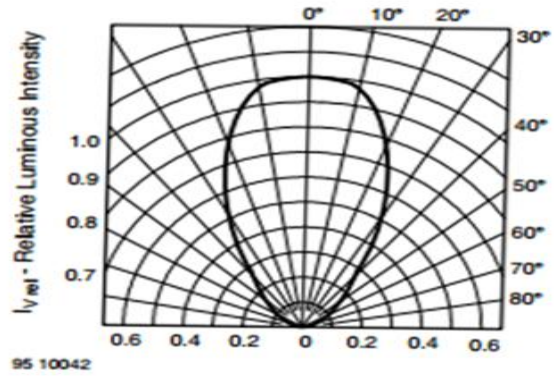


Fig. 2 - Relative Luminous Intensity vs. Angular Displacement

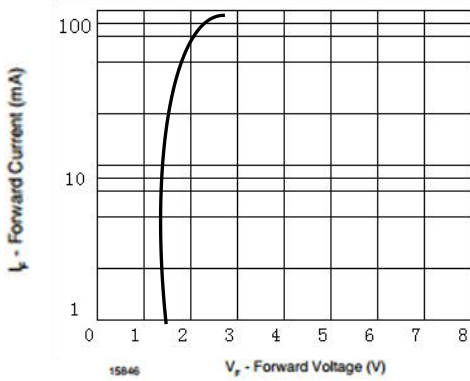


Fig. 3 - Forward Current vs. Forward Voltage

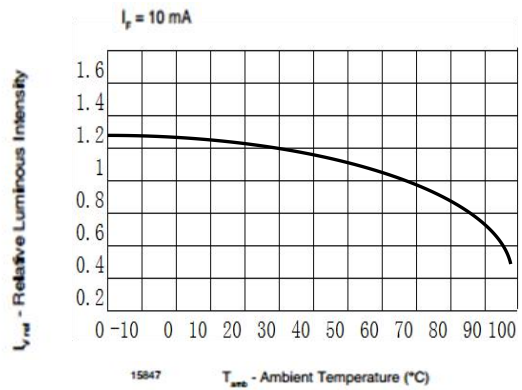


Fig. 4 - Relative Luminous Flux vs. Ambient Temperature

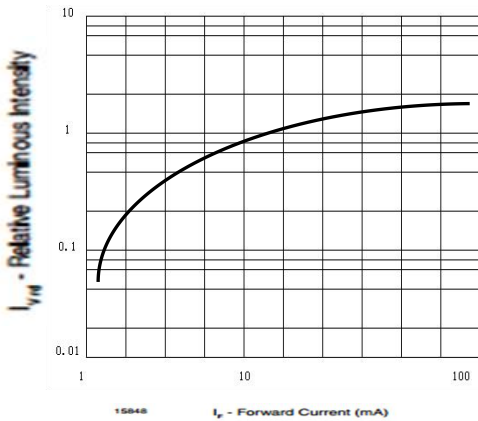


Fig. 5 - Relative Luminous Flux vs. Forward Current

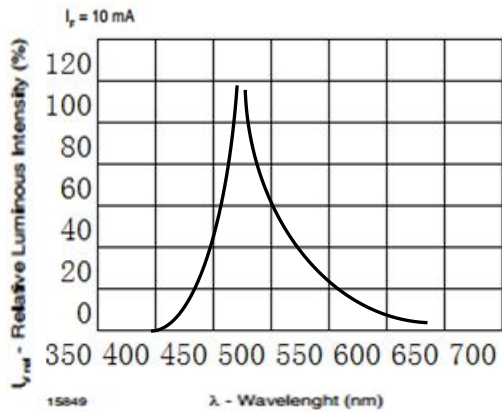


Fig. 6 - Relative Intensity vs. Wavelength

型 号 Model :

GBH5EB00T-L

页 码 Page: 4/7

深圳市光宝鸿科技有限公司

四、可靠性实验项目 Reliability Test Project

描述 Description	项目 Item	测试标准 Test criterion	测试条件 Test condition	测试时间 Test time	数量 Qty	失效数量 Fail qty
寿命测试 Life test	常温寿命测试 Life test(room temperature)	JIS7021:B4	Ta=25°C±5°C, I =30mA	1000Hrs	22	0
环境测试 Ambience test	高温存储 High temperature store	JIS7021:B10 MIL-STD-202:210A MIL-STD-750:2031	Ta=85°C±5°C	1000Hrs	22	0
	低温存储 Low temperature store	JIS7021:B12	Ta=-35°C±5°C	1000Hrs	22	0
	高温高湿测试 High temperature/ humidity test	JIS7021:B11 MIL-STD-202:103D	Ta=85°C±5°C RH=85%	1000Hrs	22	0
	冷热冲击测试 Cold / Heat strike test	JIS7021:B4 MIL-STD-202:107D MIL-STD-750:1026	30min -10°C±5°C←→100°C±5°C 5min 5min	50Cycles	22	0
	冷热循环测试 Cold and heat cycle test	JIS7021:A3 MIL-STD-202:107D MIL-STD 7 5:105E	5min 5min 5min -35°C~25°C~85°C~-35°C 30min 5min 30min 5min	50Cycles	22	0

判断标准 Judging criterion:

项目 Item	符号 Symbol	实验条件 Experiment condition	判断标准 Criteria	
			Min.	Max.
Forward Voltage	V _F	I _F =20mA	----	Initial Datex1.1
Reverse Current	I _R	V _R =5V	----	30 μ A
Luminous Intensity	I _V	I _F =20mA	Initial Datex0.7	----

型 号 Model :	GBH5EB00T-L	页 码 Page: 5/7
-------------	-------------	---------------

五、注意事项 Note

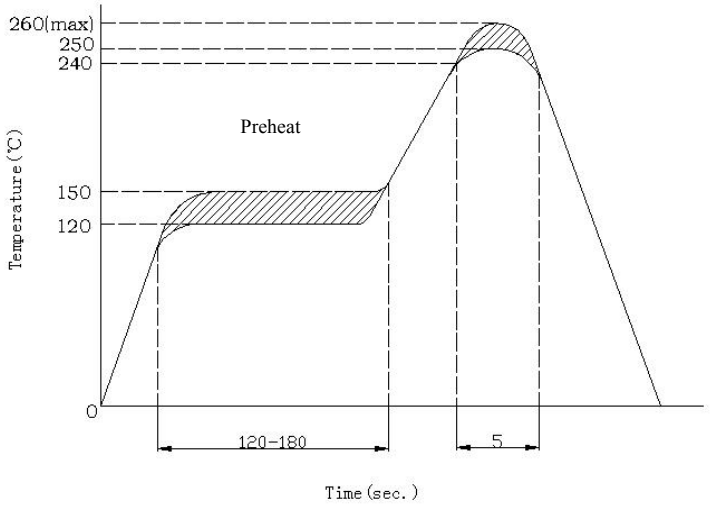
(一) 引脚成形方法 Led bracket forming method

- (1) 必需离胶体 2 毫米才能折弯支架。
The pin of led can be bent where is at least 2mm out of led colloid.
- (2) 支架成形必须用夹具或由专业人员来完成。
Must use fixture to deform the led bracket.
- (3) 支架成形必须在焊接前完成。
Finishing the forming of led bracket must be before soldering.
- (4) 支架成形需保证引脚和间距与线路板上一致。
Guarantee the gap between two pin of led tallys with LED pads in PCB when forming.

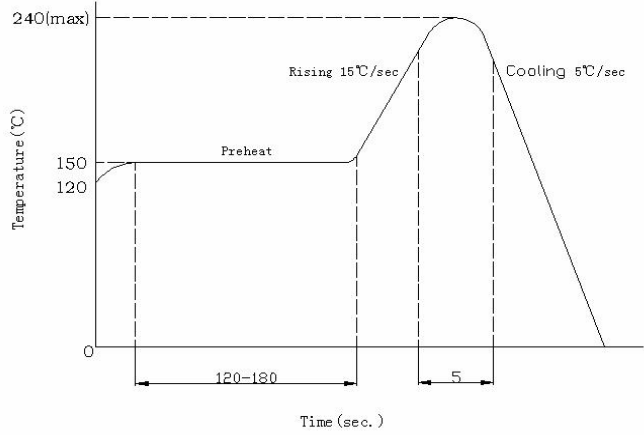
(二) 烙铁焊接 Manual soldering

烙铁（最高 30W）尖端温度不超过 330℃；焊接时间不超过 3 秒；焊接位置至少离胶体 3 毫米。
The tip temperature of soldering iron don't exceed 330℃；soldering time don't exceed 3s and soldering position must be 3mm out of led colloid.

可靠性焊接温度（A 图、B 图） Soldering temperature curve chart (figure A、figure B)



A 图
波峰焊



B 图
回流焊

型 号 Model :	GBH5EB00T-L	页 码 Page: 6/7
-------------	-------------	---------------

深圳市光宝鸿科技有限公司

(三) 防静电措施 ESD countermeasure

静电及高压会对 LED 造成损坏，特别是晶片材质为 InGaN 的产品对静电防护要求更加严格，要求在使用和检验产品时戴防静电手腕带或防静电手套，焊接工具及设备外壳需可靠接地，焊接条件遵循此份规格书中的条件。

Static electricity and high volt can damage led, The production whose Die material is InGaN must strictly required to prevent ESD, Must put on static glove and static fillet, Soldering tool and the cover of device must connect the ground, soldering condition follows the related stating of production specification manual.

(四) 过电流保护 Protecting countermeasure when over current

为避免由于电压的变化引起大电流冲击而造成产品损坏，需要加入保护电阻。

Need add the protecting resistor in circuit in order to avoid damaging led due to big current and voltage fluctuation.

(五) LED 安装方法 LED installation method

- 1) 注意各类器件外线的排列以防极性装错，器件不可与发热元件靠得太近，工作条件不要超过其规定的极限。
Pay attention to the led polarity and avoid installation wrong. Led can't be close to euthermic component, work condition should tally with it's specification.
- 2) 务必不要在引脚间距变形的情况下安装 LED。
Don't install the LED under the condition of the led pin deformation.
- 3) 当装配 LED 进入 PCB 或装配孔时，LED 支架不能承受任何压力。
The led bracket don't load any pressure when installing the led into PCB or fitting hole.
- 4) 在焊接温度回到正常以前，必须避免使 LED 受到任何的震动或外力。
Must avoid any strike and force on led before the soldering temperature return to room temperature.

(六) 存储时间 Storage time

- 1) 在温度 $5^{\circ}\text{C} \sim 35^{\circ}\text{C}$ ，湿度 RH60%条件下，产品可保存一年。超过保存期的产品需重新检测后方可使用。
Led can be stored for a year under the condition: the temperature of $5^{\circ}\text{C} \sim 35^{\circ}\text{C}$ and humidity of RH60%, These production must be re-inspected and tested before use if their storage time exceed a year.
- 2) 如果打开的产品在 $5^{\circ}\text{C} \sim 35^{\circ}\text{C}$ ，RH60%的空气条件下放置超过一周，则需要将产品在 $65^{\circ}\text{C} \pm 5^{\circ}\text{C}$ 的环境中放置 24 小时以上，并尽量在十五天内使用。
If led is exposed in air for a week under the condition: the temperature of $5^{\circ}\text{C} \sim 35^{\circ}\text{C}$, humidity of RH60%, must place the led in the ambience of $65^{\circ}\text{C} \pm 5^{\circ}\text{C}$ for 24 hours and use it in 15 days for best.

(七) 清洗 Cleaning

当用化学用品清洗胶体时必须特别小心，因为有些化学品对胶体表面有损伤并引起褪色如三氯乙烯、丙酮等。

可用乙醇擦拭、浸渍，时间在常温下不超过 3 分钟。

Be careful of some chemical results in the led colloid fades and damage when using chemical clean the led, such as chloroethylene, acetone etc. can use ethanol to wash or soak led but the time don't exceed 3 minutes.

(八) 弯脚 (Kinked)

当 LED 成形弯脚时，弯脚模具容易刮花 LED 脚支架镀层，刮伤处容易生锈，特别是空气湿度大时。为减少生锈机会，建议使用镀锡支架。

The kinked tooling scrape easily the pin of led, where the led bracket is rusting easily, especial expose it in moist air. To decrease the led bracket rust, advise using plated tin led bracket.

型 号 Model :

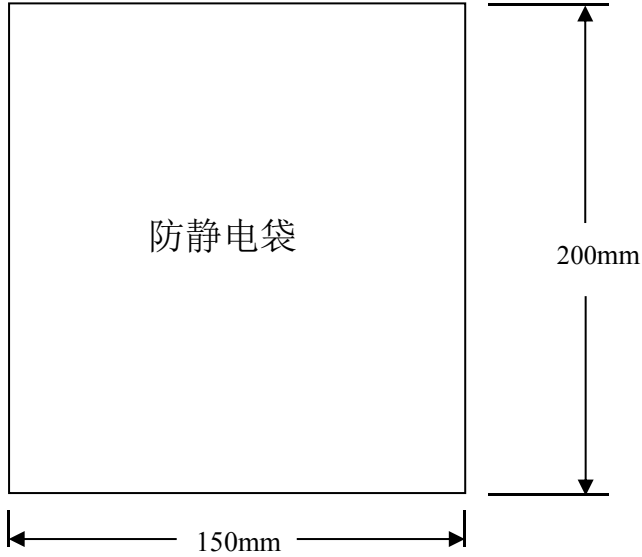
GBH5EB00T-L

页 码 Page: 7/7

深圳市光宝鸿科技有限公司

六、包装 Packing

(1)包装材料 Packing material: 防静电袋 static bag



(2) 每袋数量 Qty/per bag: 1000PCS (特殊情况可按要求而定 Can change the qty according to actual status)

(3) 外装纸箱 Packing box

注: 包装材料和外装纸箱根据客户下单实际情况定。

Remark: Decide detail packing box according to customer order or actual status.