

# Customer Information Sheet

DRAWING No.: S7071-46R

SHEET 2 OF 2

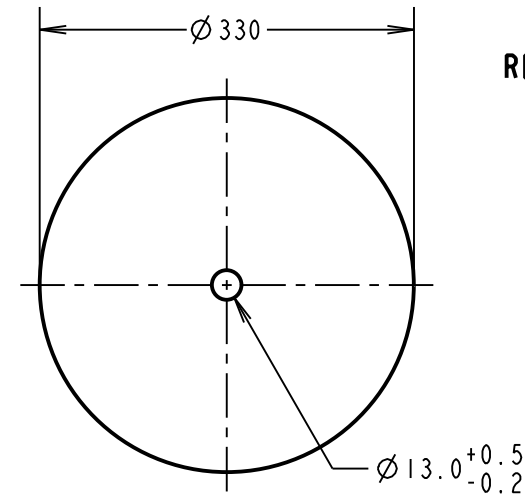
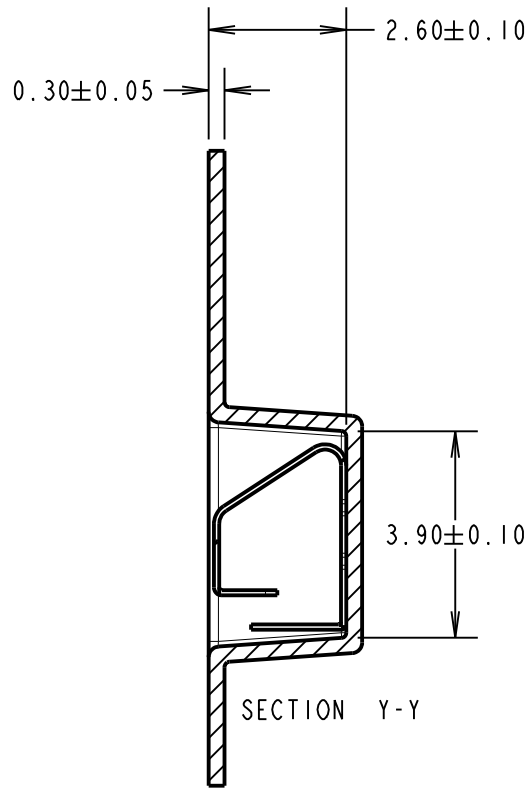
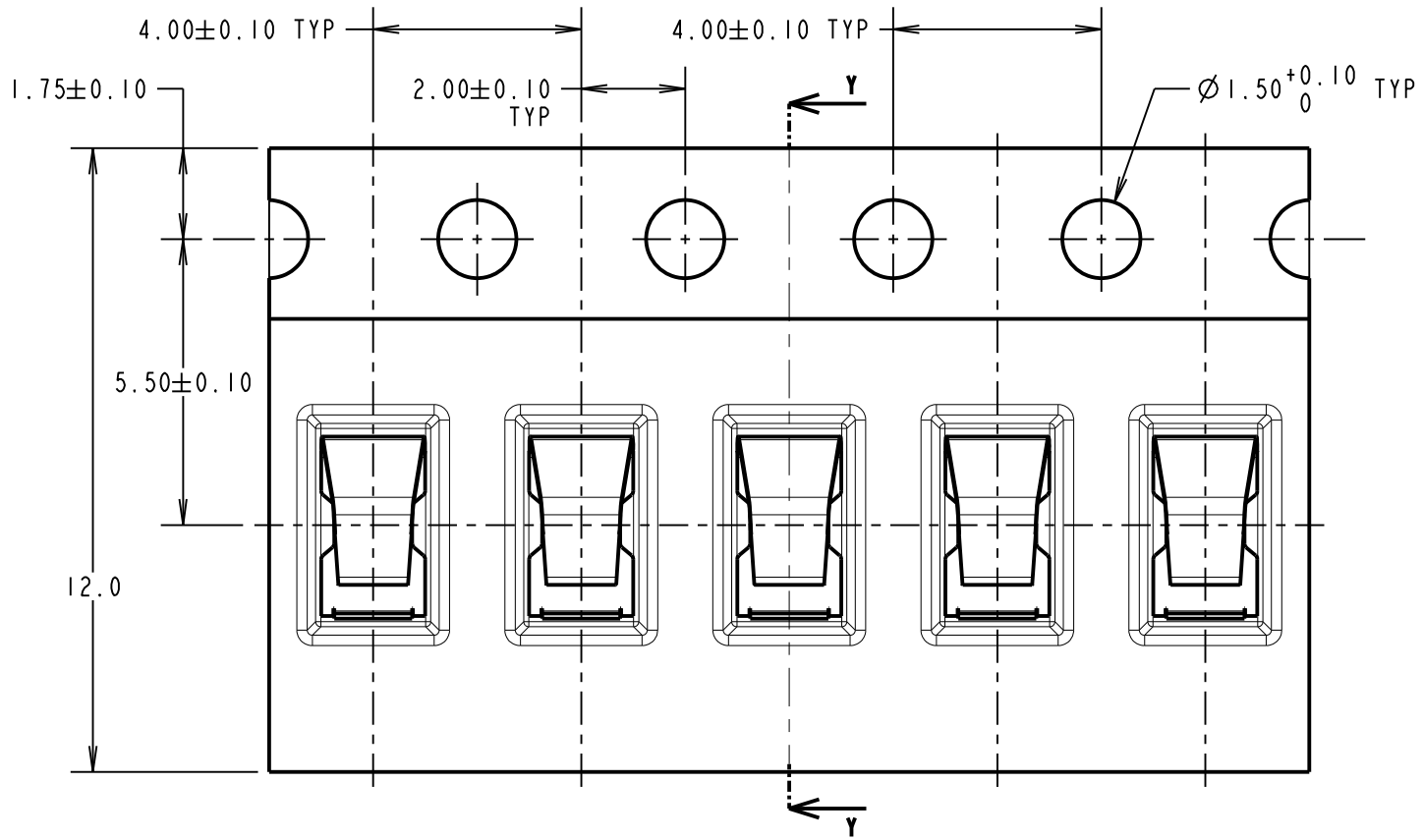
IF IN DOUBT - ASK

(C)

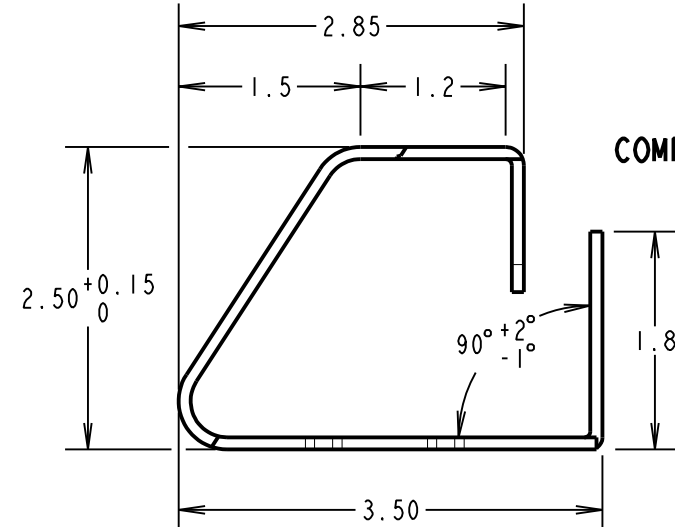
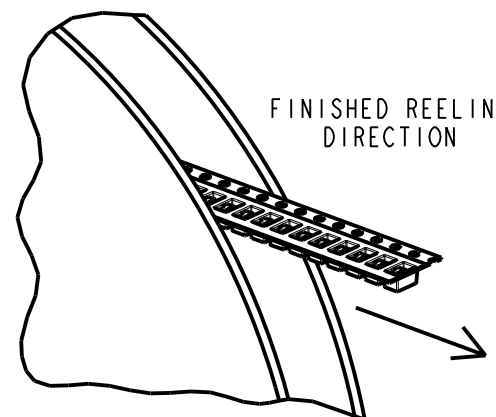
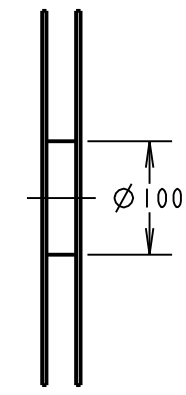
NOT TO SCALE

THIRD ANGLE PROJECTION

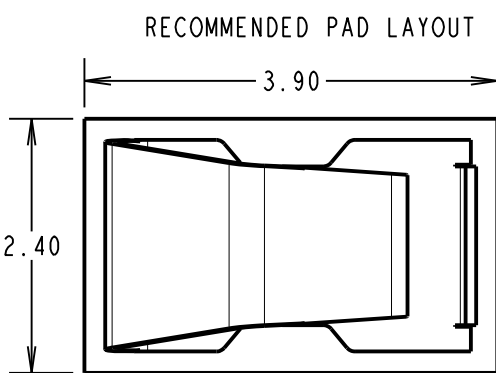
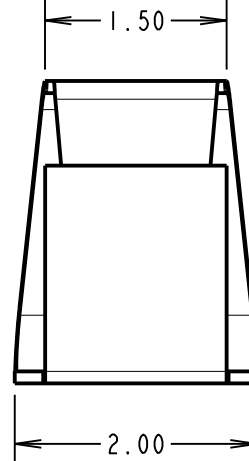
ALL DIMENSIONS IN mm



## REEL DETAILS

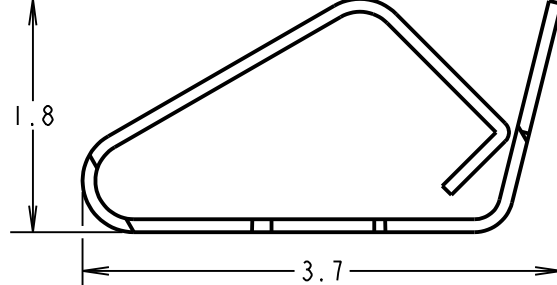


## COMPONENT DETAILS



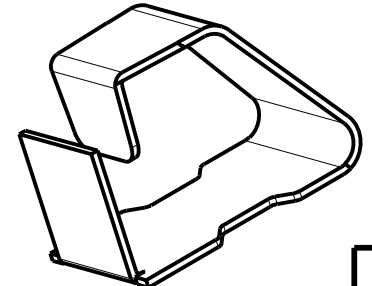
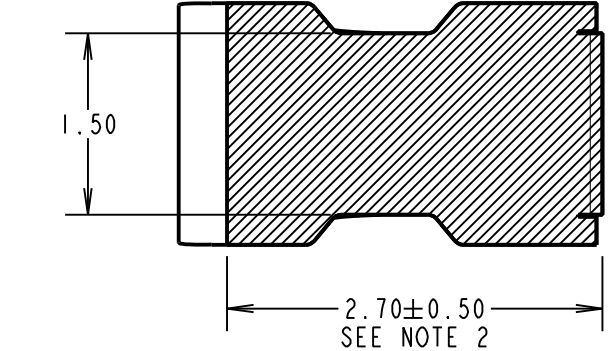
## RECOMMENDED PAD LAYOUT

## COMPONENT AT MINIMUM RECOMMENDED HEIGHT



COMPONENT SPECIFICATION:  
MATERIAL = TITANIUM COPPER ALLOY,  
0.10mm THICK  
FINISH = 0.7µ-1.3µ NICKEL ALL OVER,  
2.54µ MIN 100% MATTE TIN ON  
FOOT AREA.  
RECOMMENDED WORKING HEIGHT = 2.10mm / MIN FORCE = 1.2N  
RECOMMENDED MINIMUM WORKING HEIGHT = 1.80mm  
ELECTRICAL:  
CURRENT RATING = 5A  
MECHANICAL:  
DURABILITY = 3500 CYCLES  
ENVIRONMENTAL:  
OPERATING TEMPERATURE = -55°C TO +125°C

NOTES:  
1. QUANTITY PER REEL = 6000.  
2. AREA FOR MATTE TIN PLATE.  
3. ALL TOLERANCES ARE: X.X = ±0.30mm  
X.XX = ±0.15mm  
UNLESS OTHERWISE STATED.



SCALE 1:1

**HARWIN**

www.harwin.com  
technical@harwin.com

THIS DRAWING AND ANY  
INFORMATION OR DESCRIPTIVE  
MATTER SET OUT HEREON ARE  
CONFIDENTIAL AND COPYRIGHT  
PROPERTY OF THE HARWIN  
GROUP AND MUST NOT BE  
DISCLOSED, LOANED, COPIED  
OR USED FOR MANUFACTURING,  
TENDERING OR FOR ANY  
OTHER PURPOSE WITHOUT  
THEIR WRITTEN PERMISSION.

TOLERANCES  
X = ±1mm  
X.X = ±0.25mm  
X.XX = ±0.10mm  
X.XXX = ±0.01mm  
ANGLES = ±5°  
UNLESS STATED

MATERIAL:  
SEE ABOVE  
FINISH: SEE ABOVE  
S/AREA: mm<sup>2</sup>

TITLE:  
SMT SHIELD FINGER (2.5mm)  
IN TAPE AND REEL  
DRAWING NUMBER:  
S7071-46R  
SHT 2 OF 2

SB	8	18.11.16	20200
NAME	ISS.	DATE	C/NOT
APPROVED:		S.BENNETT	
CHECKED:		M.PLESTED	
DRAWN:		R.ADDE	
CUSTOMER REF.:			
ASSEMBLY DRG:			

# Mouser Electronics

Authorized Distributor

Click to View Pricing, Inventory, Delivery & Lifecycle Information:

Harwin:

S7071-46R